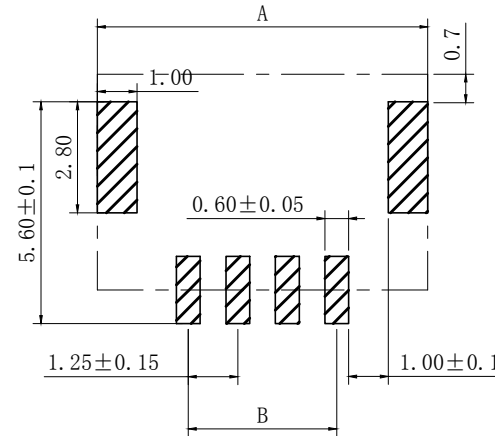
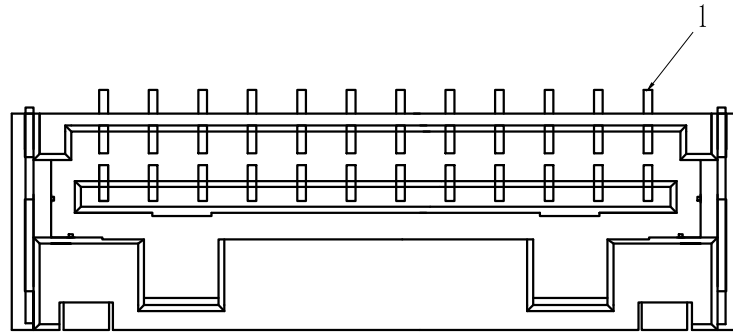
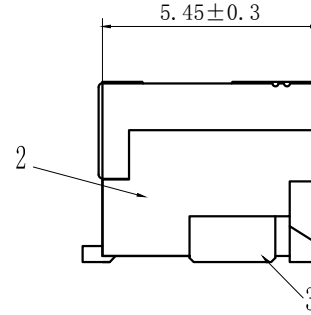
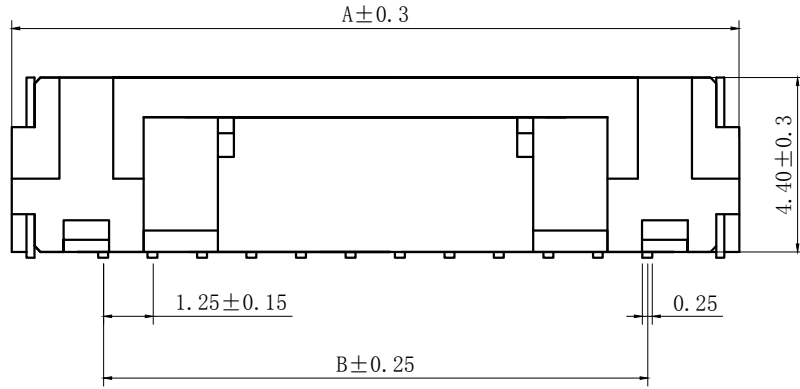


序号	名称	材料
1	插针	磷青铜 (镀锡)
2	底座	LCP UL94V-0
3	焊片	黄铜 (镀锡)

版次	日期	内容

Electrical properties



- 1、Current rating: 1A AC\DC
- 2、Voltage rating: 50V AC\DC
- 3、Temperature range: -25°C to 85°C
- 4、Contact resistance: Initial value/20mΩ max
- 5、Insulation resistance: 100MΩ min
- 6、Withstanding voltage: 250V AC/ minute



PCB LAYOUT

孔位 poles	A	B
2	5.85	1.25
3	7.10	2.50
4	8.35	3.75
5	9.60	5.00
6	10.85	6.25
7	12.10	7.50
8	13.35	8.75
9	14.60	10.00
10	15.85	11.25
11	17.10	12.50
12	18.35	13.75
13	19.60	15.00
14	20.85	16.25
15	22.10	17.50

浙江乐马电气有限公司 设计 张书晨

尺寸公差	角度公差	品名: 502380-nAB 图号: 12503-AB	设计	张书晨
.X ±0.25	X.° ±3.0°		审核	王佳
.XX ±0.15	.X° ±2.0°		批准	陈其林
.XXX ±0.05	.XX° ±1.0°	比例: --	页数: 1/1	版本: A
  单位: mm				